

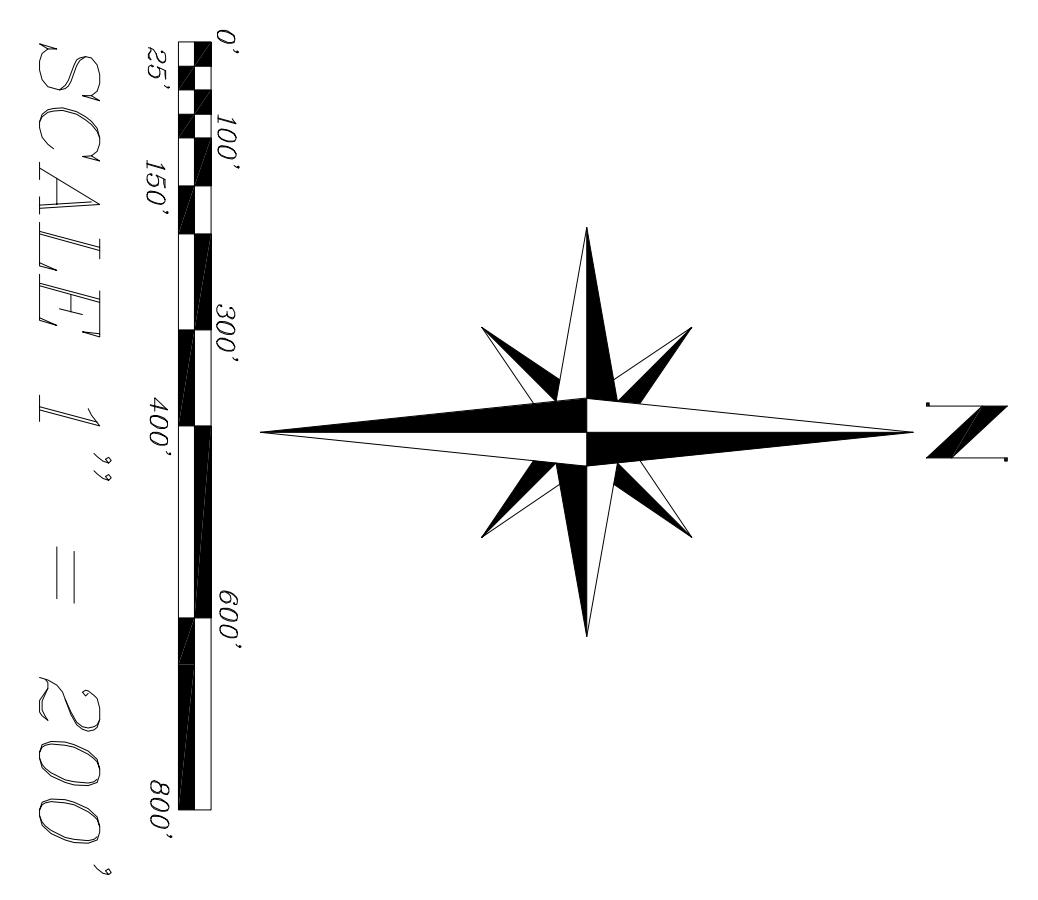
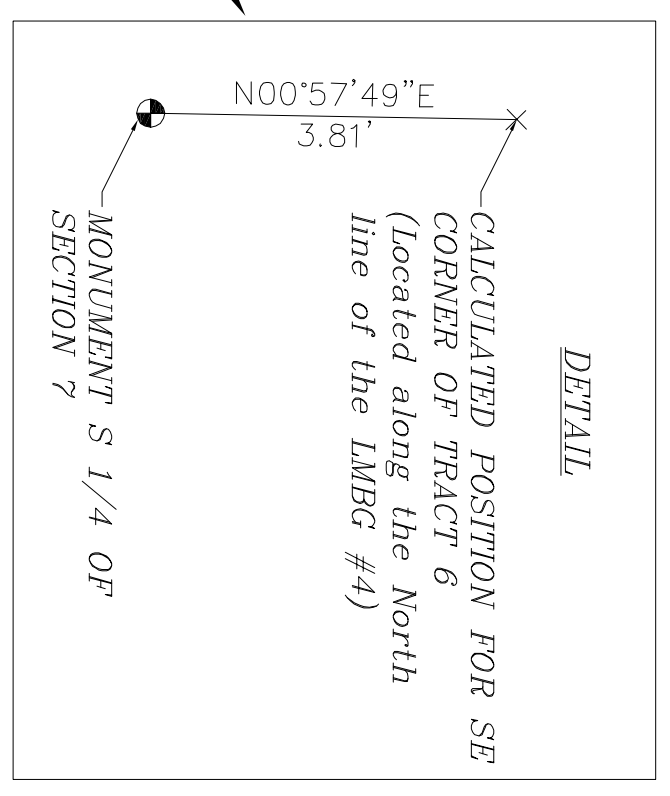
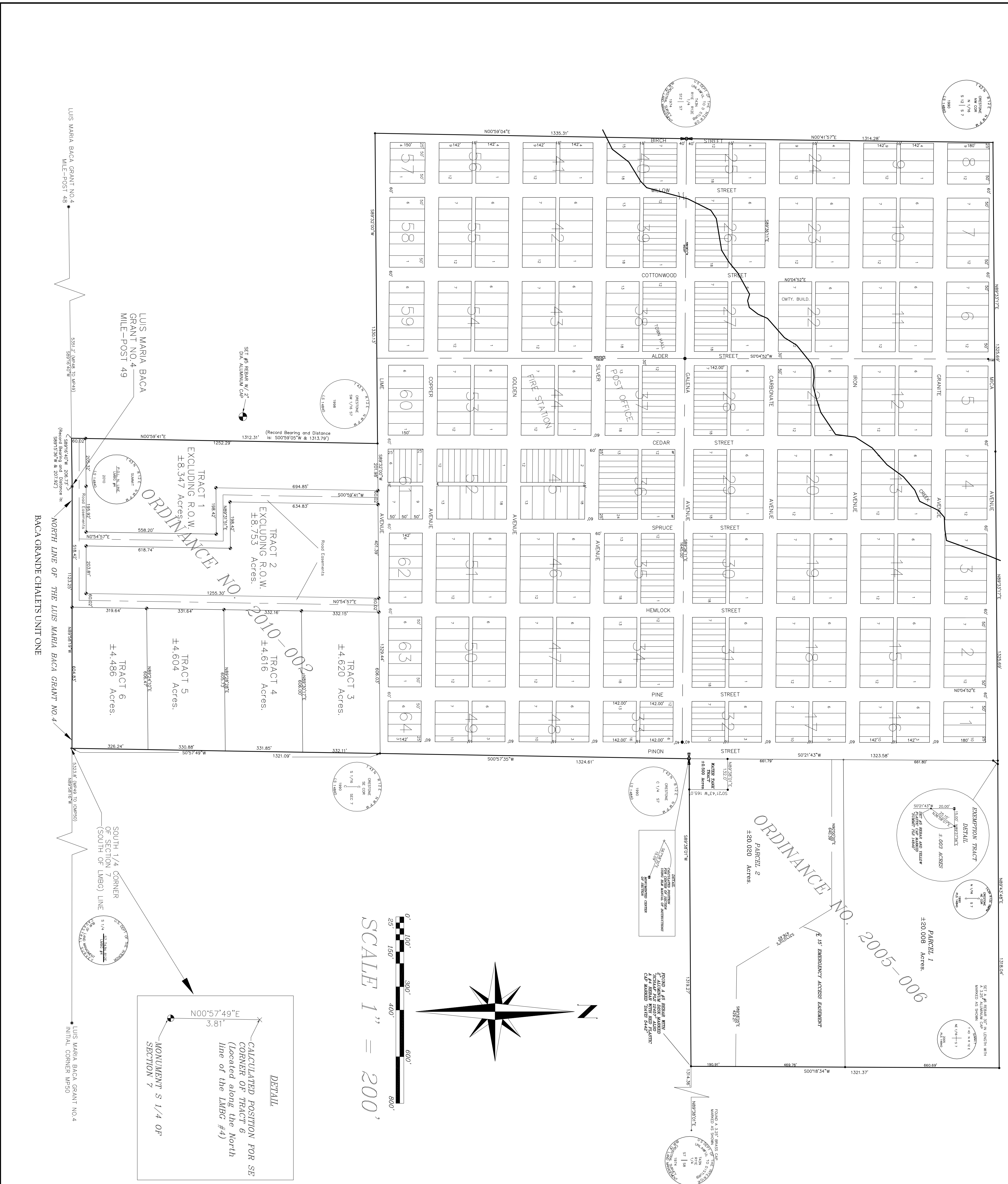
**TOWN OF CRESTONE  
BOUNDARY MAP**  
LOCATED IN THE SE 1/4 SW 1/4 SECTION 7, T.43 N., R.12 E., N.M.P.M.  
SAGUACHE COUNTY, COLORADO.

**SURVEYOR'S CERTIFICATE**  
I, Scott E. Johnson, a duly registered Professional Land Surveyor in the State of Colorado, do hereby certify that this survey was made by me or under my supervision, that the survey is accurately represented on this map, and that the statements contained hereon were read by me and are true to the best of my knowledge.

Scott E. Johnson PLS 14840 \_\_\_\_\_ Date \_\_\_\_\_

**CLERK AND RECORDER'S CERTIFICATE**  
This map was filed for record in the office of the Clerk and Recorder at \_\_\_\_\_ O'clock \_\_\_\_\_ M., the \_\_\_\_\_ day of \_\_\_\_\_ A.D., 2012, and is duly recorded in Book \_\_\_\_\_ at Page No. \_\_\_\_\_ or at Reception No. \_\_\_\_\_

\_\_\_\_\_  
Clerk and Recorder  
County of Saguache  
State of Colorado  
By \_\_\_\_\_  
Deputy



**TOWN OF CRESTONE  
BOUNDARY MAP**  
1317 STATE AVENUE  
ALBUQUERQUE, NM 87103  
505-261-5127  
www.townofcrestone.com

**SUMMIT ENGINEERING CO.**  
1317 STATE AVENUE  
ALBUQUERQUE, NM 87103  
505-261-5127  
www.summiteng.com

